




KEY:

 = orientation

 = fold

 = scoring guide mark









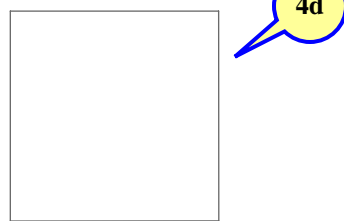
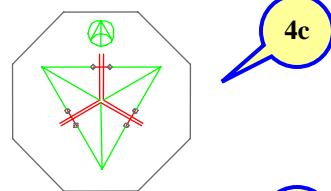
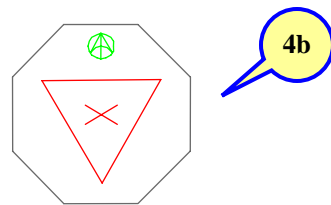
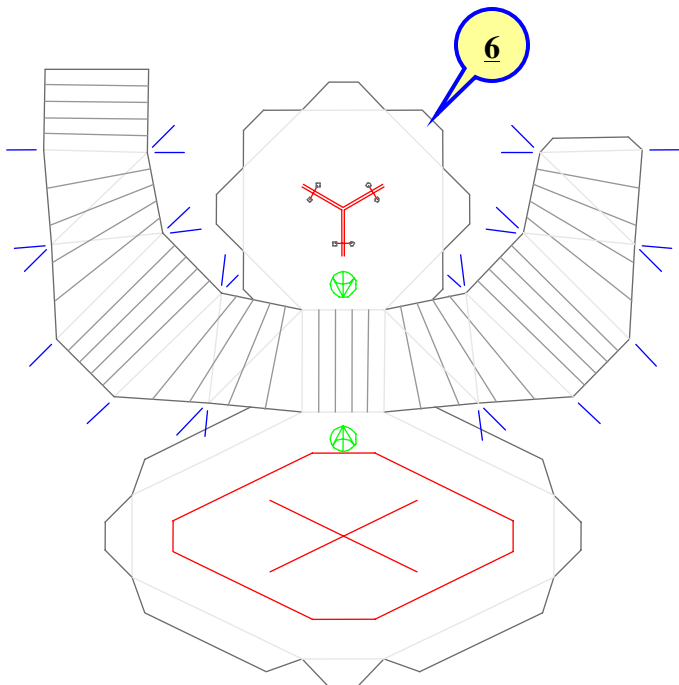
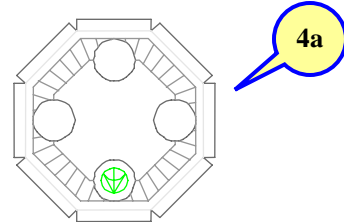
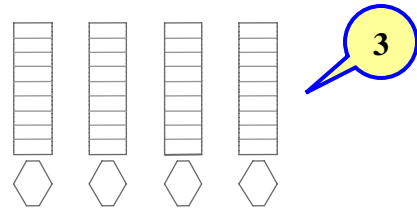
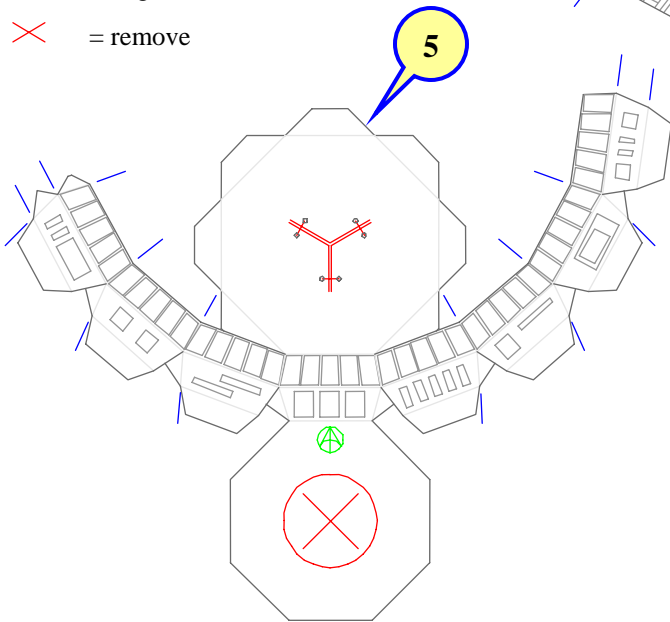
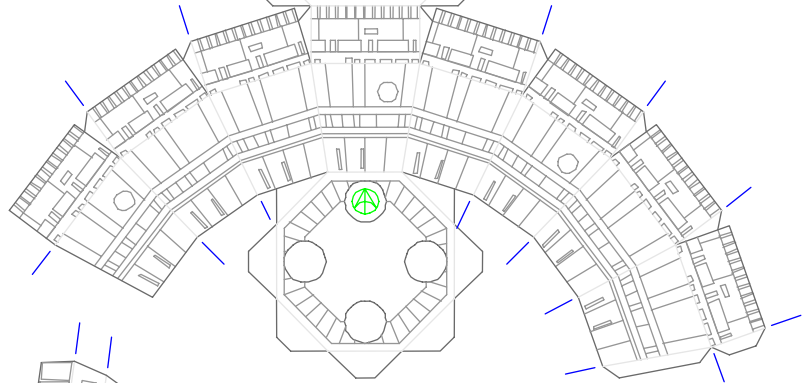
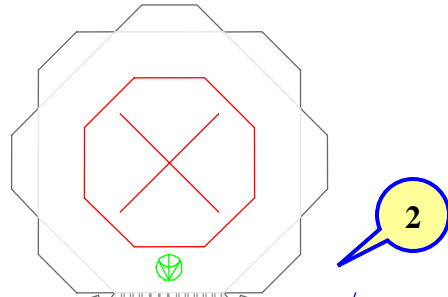
Homespun Magixx

papercraft models and such






KEY:

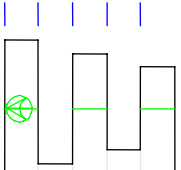
-  = orientation
-  = fold
-  = scoring guide mark
-  = cut
-  = alignment
-  = remove



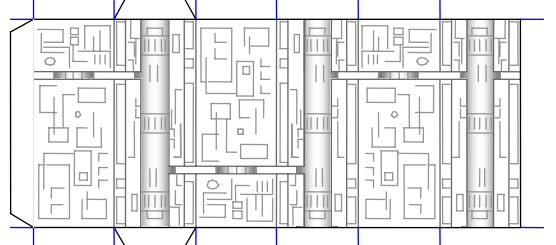
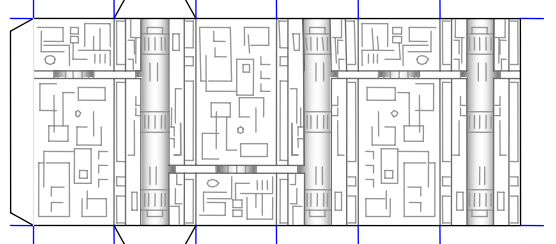
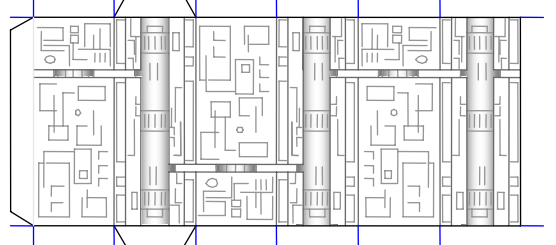
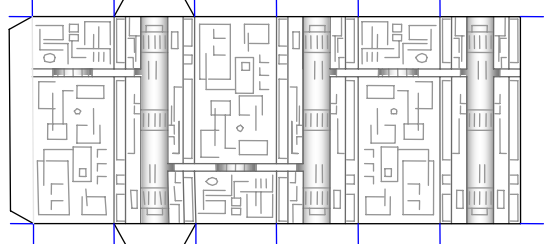
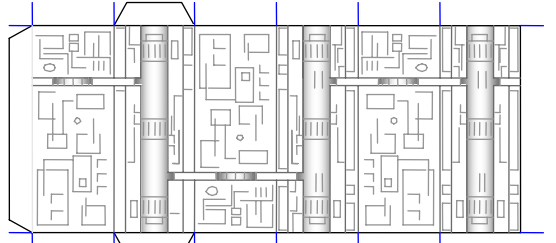
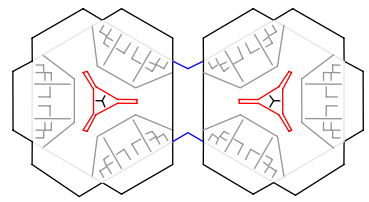
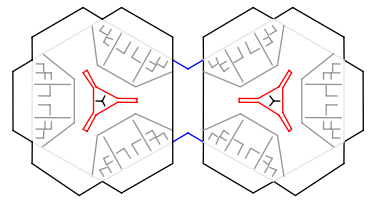
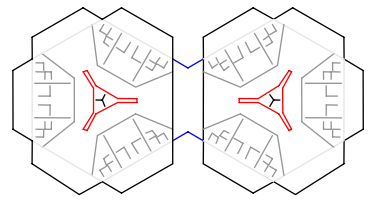
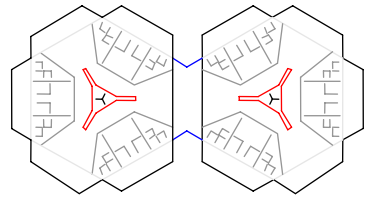
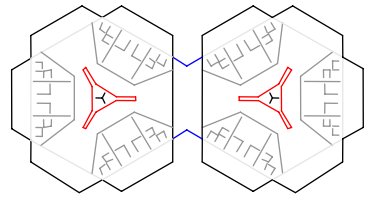
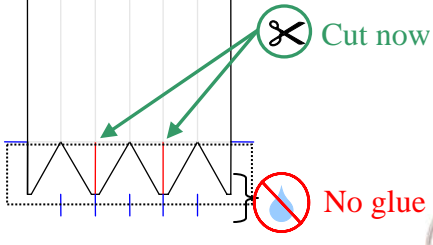
Laminate to opposite sides of a 1mm thick piece of card

  Do not cut until later
 No glue

7a



7b



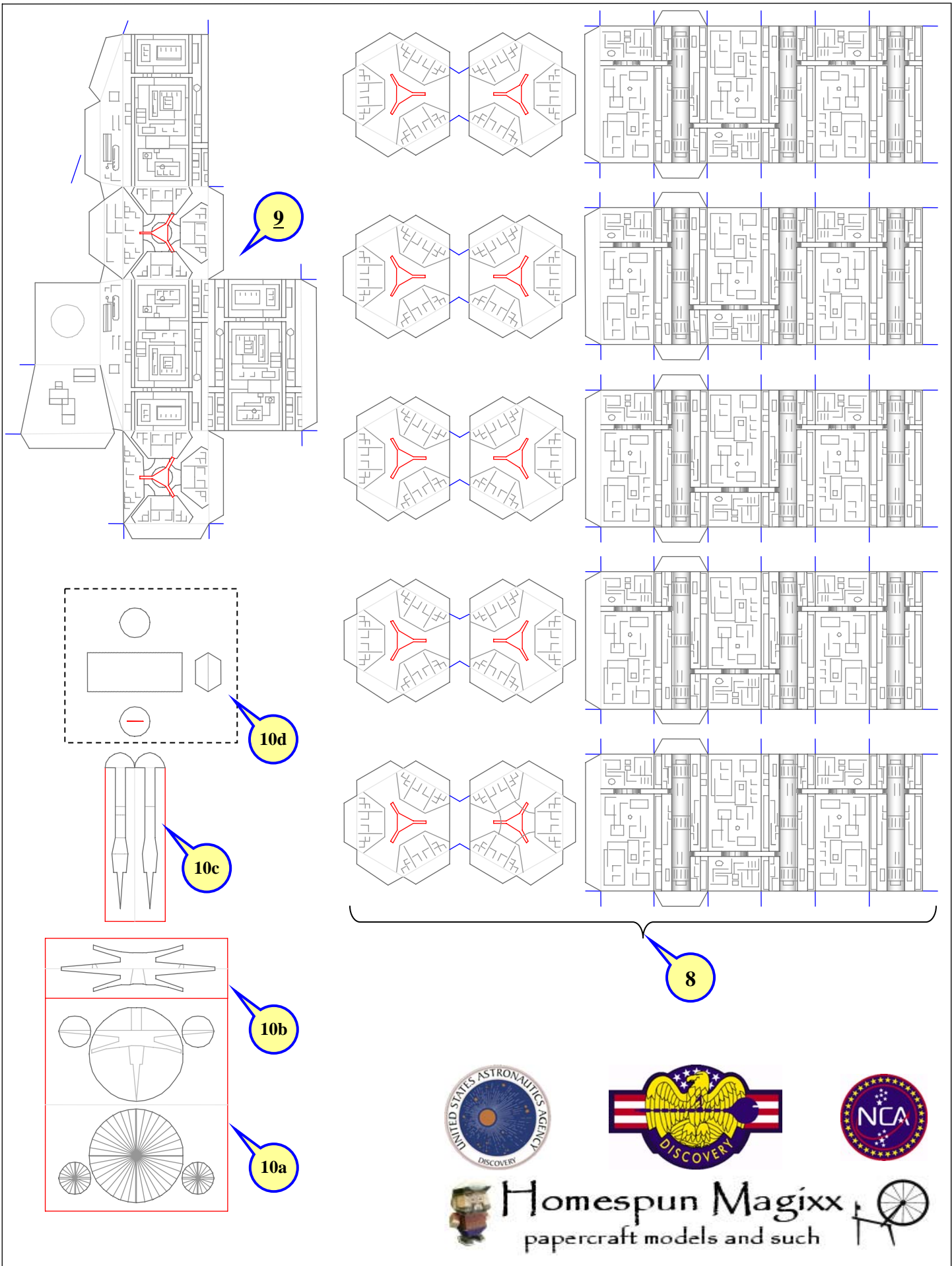
8

 No glue



Homespun Magixx
papercraft models and such



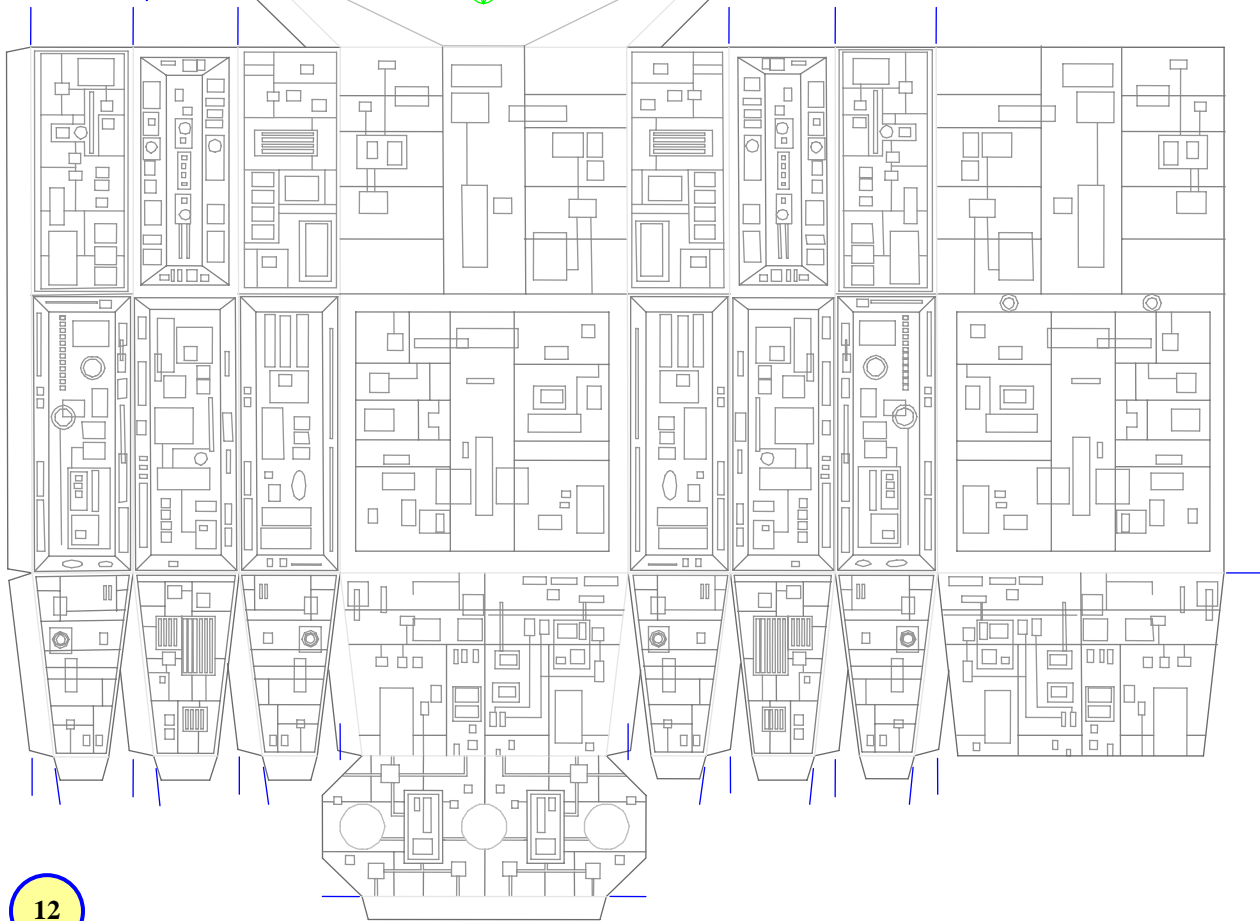
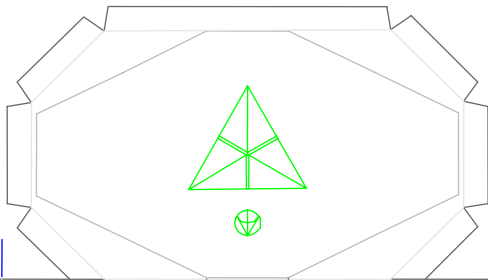


Homespun Magixx
papercraft models and such

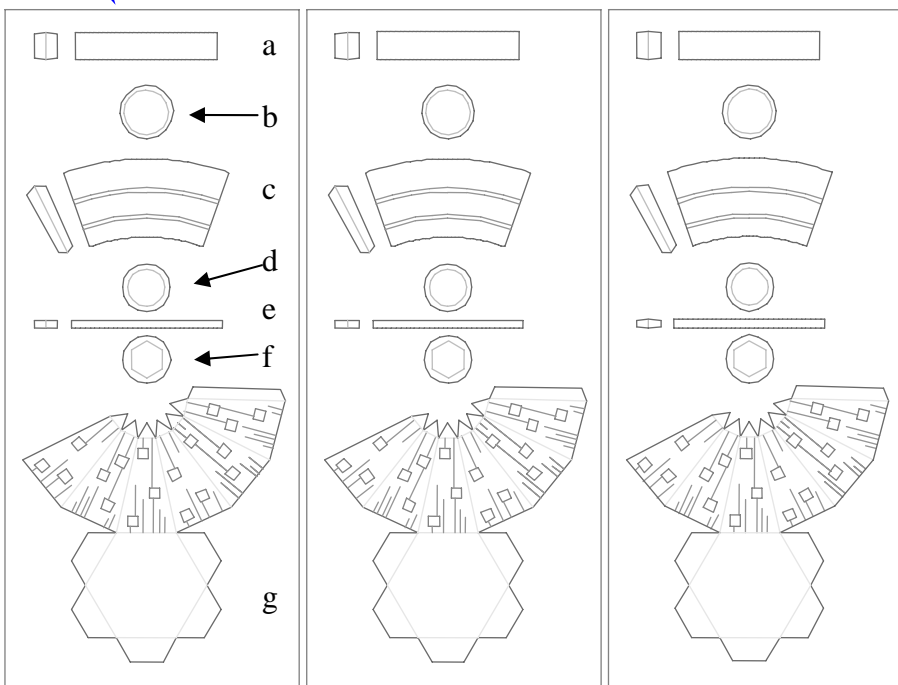




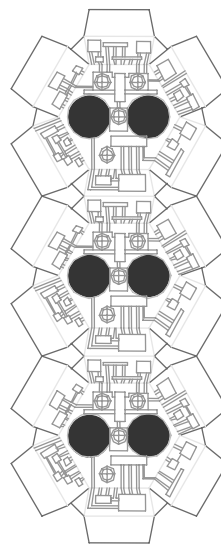
11



12



13



14

